



# Windows Next Gen

STEFANO IZZO

MODERN WORKPLACE ARCHITECT



# Agenda

---

01 Overview of Windows Next Gen

---

02 Translating Technology into Business Value

---

03 Journey to Cloud-Native



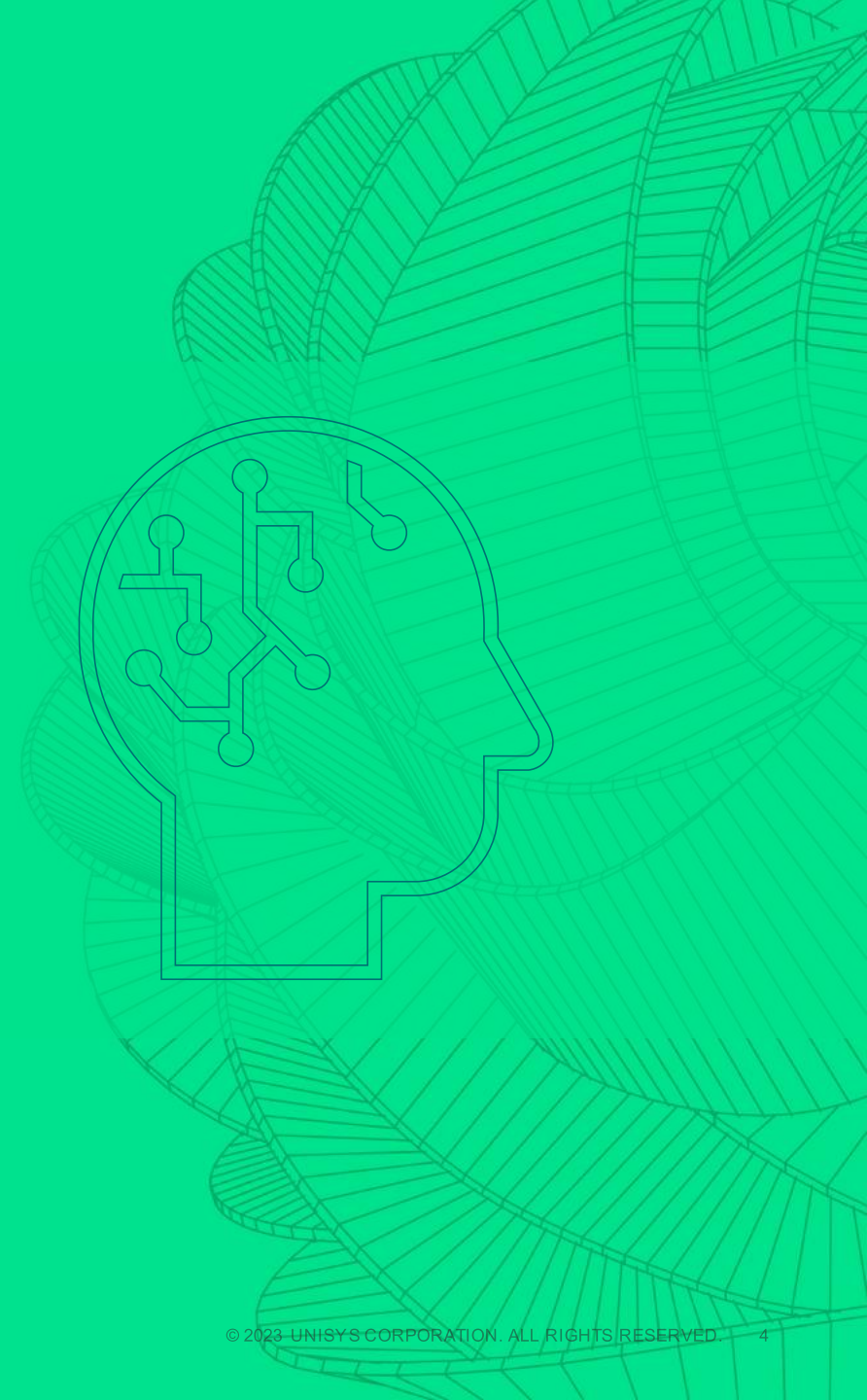
# Overview of Windows Next Gen

# 01



*Employees need to collaborate, work from anywhere and securely access company resources. IT needs to protect organizational data, manage user access and support users from wherever they work.*

*Modern Endpoint Management is a collection of tools engineered to evolve the Modern Workplace into space that is cherished by users, secured by IT and trusted universally*



# Drivers for Modern Device Management

**Unified Endpoint  
Management**

**Cloud-Based  
Flexibility**

**Greater Security with  
Zero-Trust Model**

**Streamlined Device  
Lifecycle**

**Cloud-Based  
Analytics and  
Monitoring**

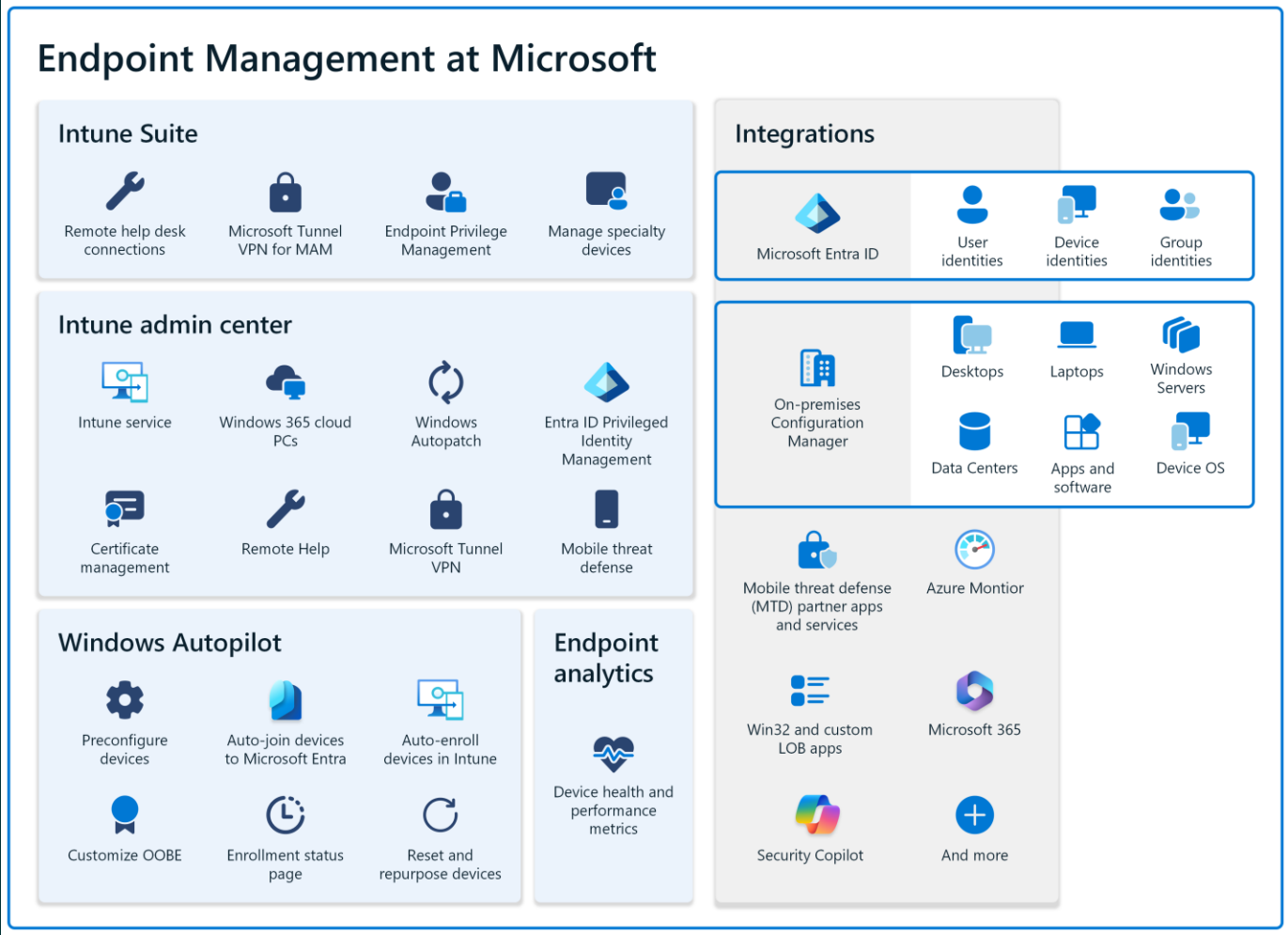
**Cost Savings**



# Translating Technology into Business Value

# 02

# Unified Endpoint Management within the Microsoft 365 Cloud



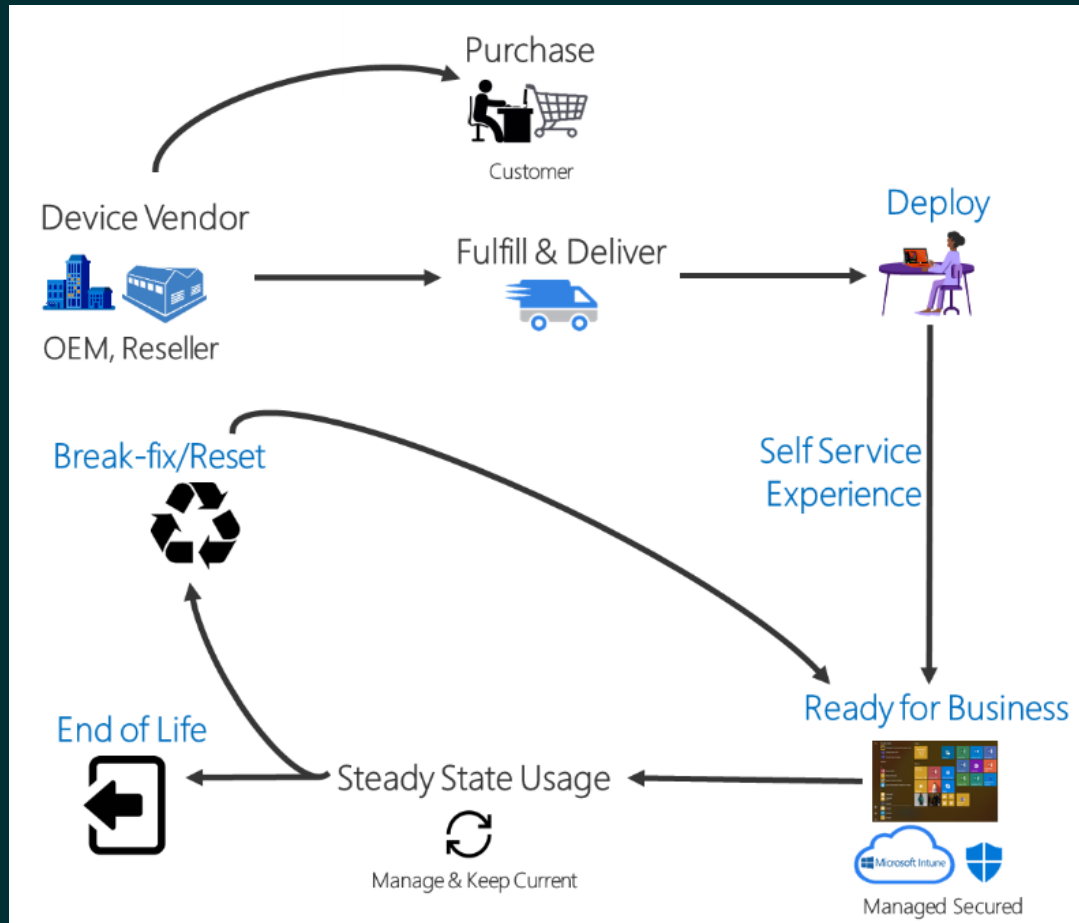
# Microsoft Intune

- Cloud-based endpoint management solution across your many devices, including mobile devices, desktop computers, and virtual endpoints.
- **Unifies your endpoint management solutions** and workflows together in one place, reducing complexity for IT and security operations.
- Integrates with your on-premises environment and can be used alongside Configuration Manager in a co-managed scenario
- Ensure device health and compliance by using Microsoft Security signals and advanced endpoint management capabilities to mitigate cyberthreats and protect corporate data.
- Reduces overall costs and increases efficiency by consolidating vendors and save more with cost-effective licensing.





# Cloud Provisioning with Windows Autopilot



- Cloud-native service designed to **streamline the lifecycle of Windows devices**.
- Empowers users to enroll their own device as a cloud-native endpoint
- Maximises efficiencies and reduces users' non-productive time during device provisioning
- Reduces IT effort to deploy, manage and retire devices
- Increases cost savings by reducing dependencies on costly on-prem infrastructure

# Deliver Next-Gen Security Features with the Intune Suite

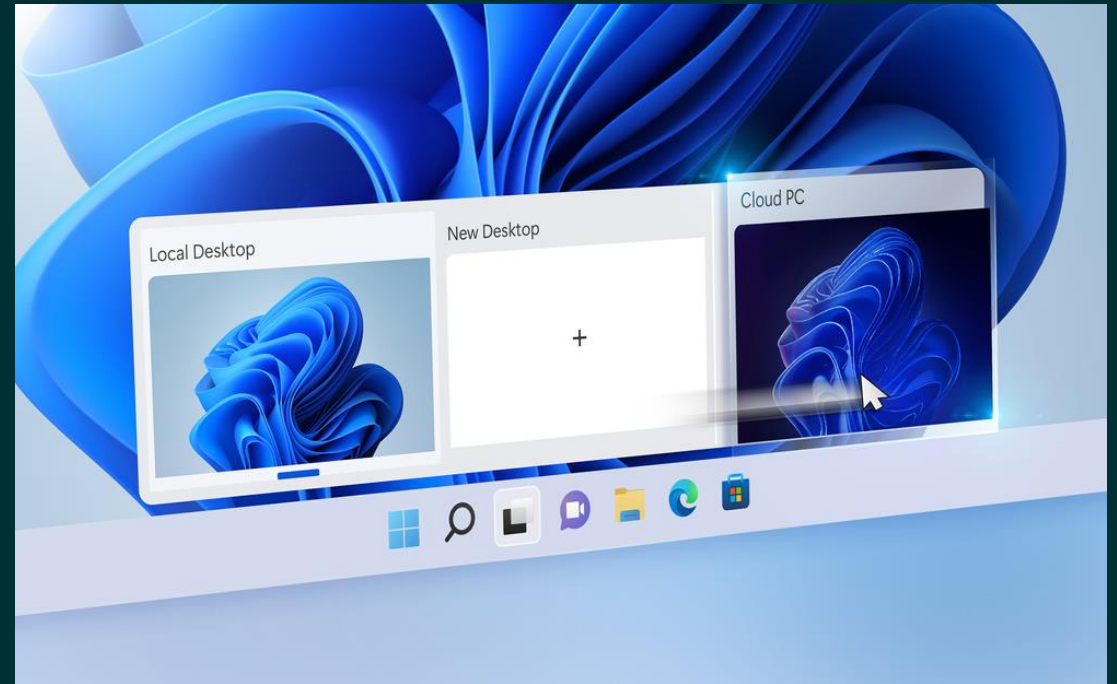
Unifies advanced endpoint management and security solutions into one simple bundle:

- **Endpoint Privilege Management:** Supports your zero-trust journey by helping your organization achieve a broad user base running with least privilege, while allowing users to still run tasks allowed by your organization to remain productive.
- **Enterprise App Management:** Provides an Enterprise App Catalog of Win32 applications that are easily accessible in Intune
- **Advanced Analytics:** Set of analytics-driven capabilities that help IT admins understand, anticipate, and improve the end-user experience.
- **Remote Help:** Cloud-based solution for secure help desk connections with role-based access controls
- **Microsoft Tunnel for Mobile Application Management:** Extends the Microsoft Tunnel VPN gateway to support devices that run Android or iOS and that aren't enrolled with Microsoft Intune.
- **Cloud PKI:** Cloud-based service that simplifies and automates certificate lifecycle management for Intune-managed devices. It provides a dedicated public key infrastructure (PKI) for your organization and handles the certificate issuance, renewal, and revocation for all Intune-supported platforms.



# Deploy Windows in the Cloud with the Windows 365 Cloud PC

- Cloud service that introduces a new way to experience Windows, taking the operating system to the Microsoft Cloud: the **Cloud PC**.
- Securely streams the full Windows experience—including all your apps, data, and settings—to users' corporate or personal devices through an instant boot experience.
- Consistent user experience across all devices, allowing users to switch from one device to another
- Temporary workers can ramp on and off according to the needs of the business, allowing organizations to scale for busy periods without the complicated logistical and security challenges of issuing new hardware.



# Windows 365 v Azure Virtual Desktop



Optimised for  
**experience**



Complete end-to-  
end Microsoft  
service



Predictable per-user  
pricing



Optimised for  
**flexibility**



Full control over  
configuration and  
management

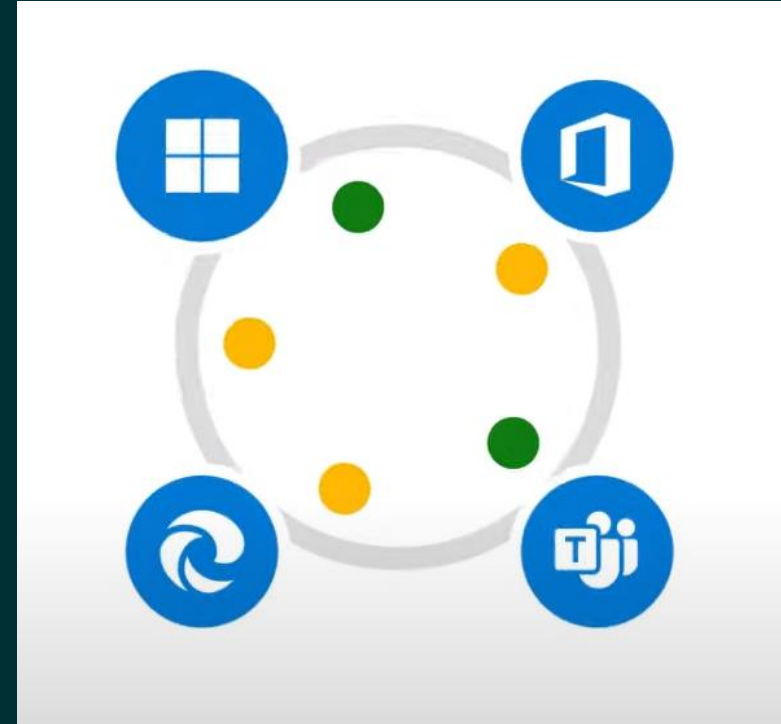


Flexible  
consumption-based  
pricing



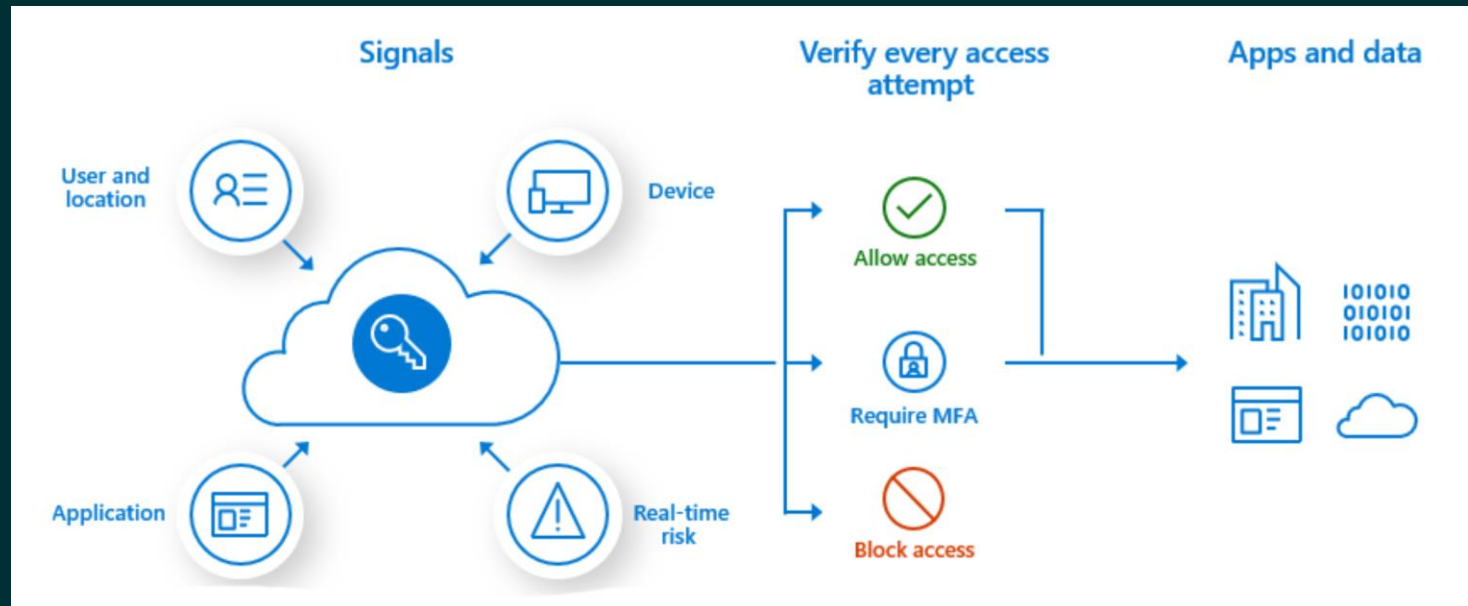
# Simplify Windows Updates with WUfB and Autopatch

- **Windows Update for Business** allows organizations to keep their Windows devices always up to date with the latest security updates and features by directly connecting to the Windows Update service over the internet.
- WUfB enables customers to manage which updates are received along with the experience a device has when it receives them.
- **Windows Autopatch** is a cloud service that automates Windows, Microsoft 365 Apps, Microsoft Edge, and Microsoft Teams updates to improve security and productivity across.
- Microsoft manages device patching on customers' behalf.



# Conditional Access

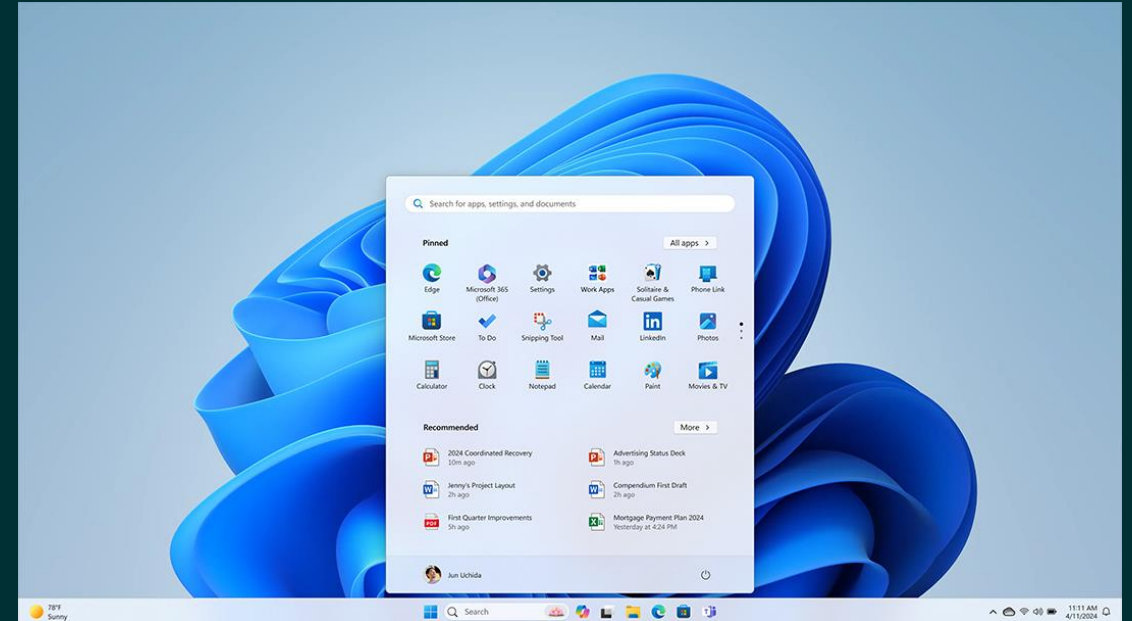
Identity is the new security perimeter



- With Conditional Access you can implement automated access control for accessing your cloud apps based on defined conditions
- Evaluates multiple signals from various sources (i.e.: users group membership, device type, applications, sign-in risk, IP location etc.) to make decisions and enforce organisational policies
- Use Conditional Access policies to apply the right access controls to keep your organization secure and increase users' productivity.

# Windows 11

- Zero Trust-ready by design, with built-in security technologies that will add protection from the chip to cloud, reducing the risk of security breaches.
- 99% application compatibility updating from Windows 10 to Windows 11. Microsoft App Assure available to resolve compatibility issues at no additional cost.
- Windows 10 End-of-Life is October 2025 with costly ESU programs
- Upgrading to Windows 11 should be treated as a standard feature update. Leveraging WUfB in Intune provides a seamless upgrade experience for both IT and end-users

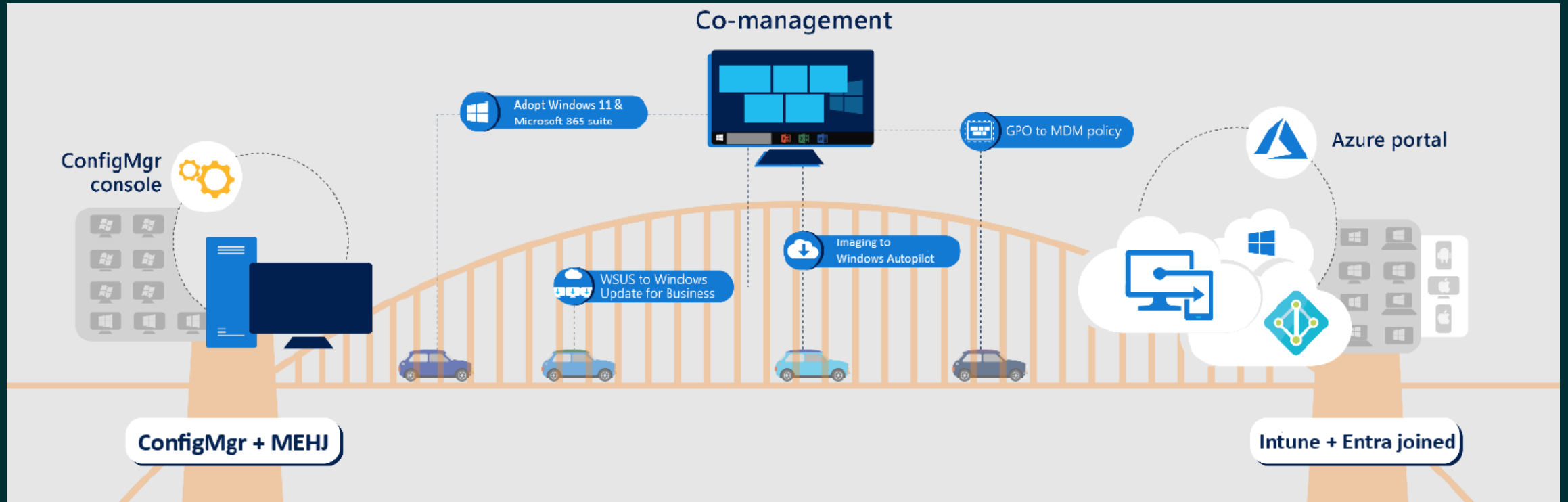


# Journey to Cloud-Native

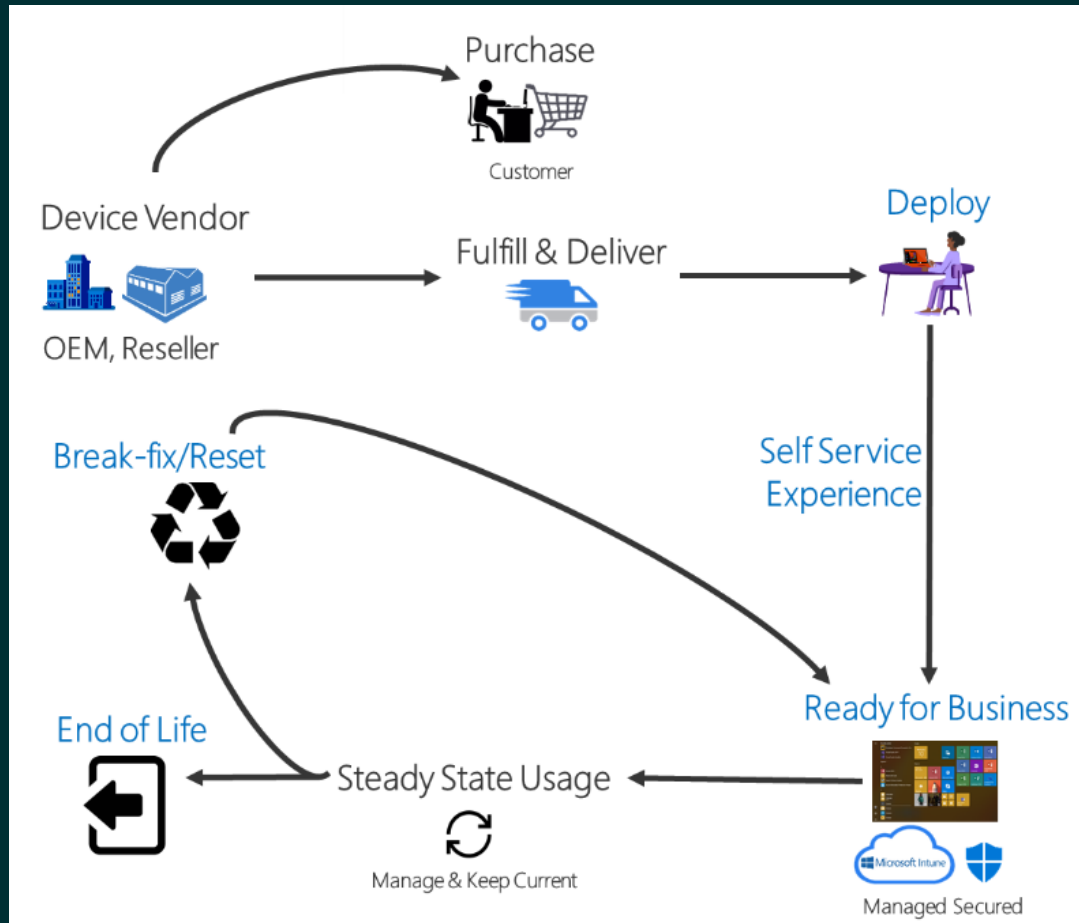
# 03



# Journey to Cloud-Native

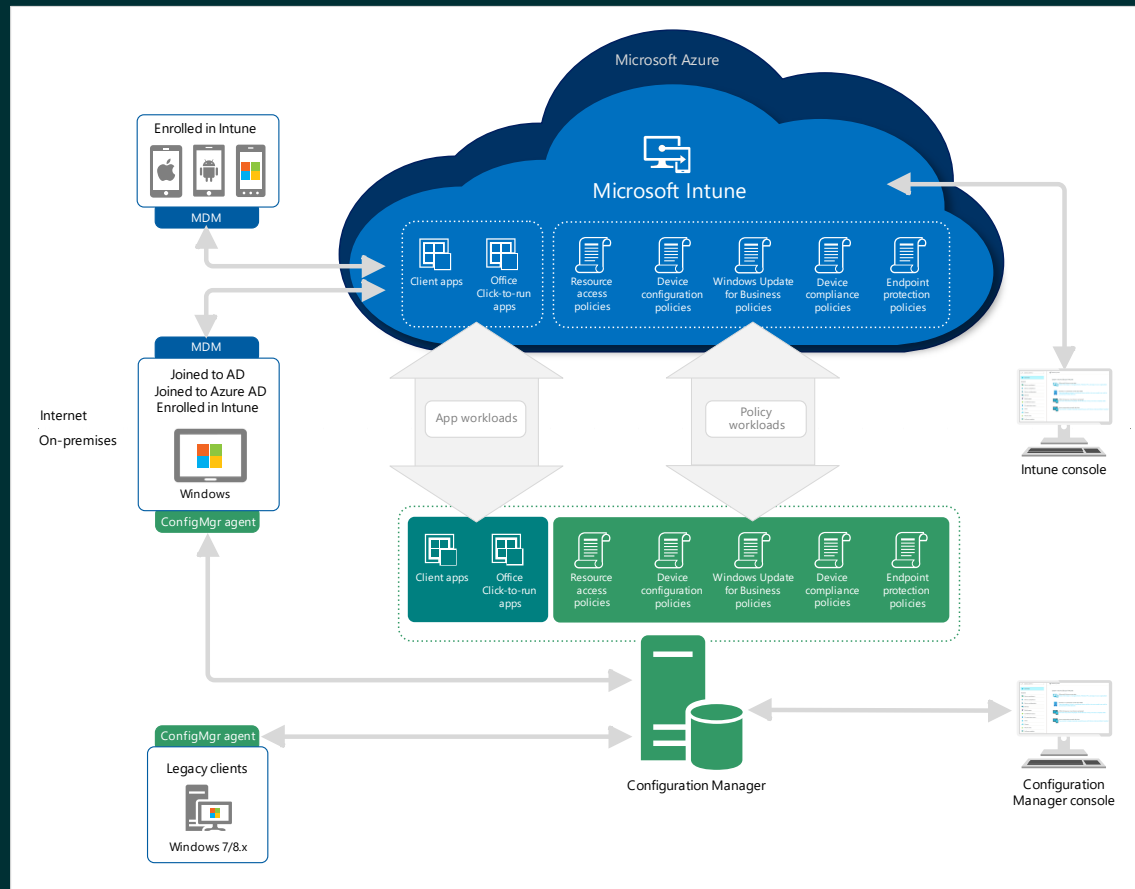


# New Devices: Cloud-Native with Windows Autopilot



- Cloud-native service designed to streamline the lifecycle of Windows devices.
- Maximises efficiencies and reduces non-productive time by preconfiguring devices increasing users' productivity.
- Reduces time IT spends on deploying, managing, and retiring devices.
- Increases cost savings by reducing dependencies on costly on-prem infrastructure

# Existing Devices: Cloud attach with Co-Management



- Co-Management combines your existing SCCM deployment with cloud-based Intune features, allowing you to concurrently manage devices from a single pane of glass.
- Interim step for existing devices, allowing you to take advantage of the benefits of the cloud without disrupting users.
- Move workloads to Intune at your own pace as you progress through your cloud journey
- Replace devices at the end of their life with cloud-native endpoints

# Case Study: Digital Workplace Transformation Programme



## Challenge

Transition from legacy to Cloud-Native Modern Management

Enhance end-to-end device lifecycle through the adoption of cloud-based technologies built on the M365 environment.

Provide unified endpoint management capabilities to IT whilst enhancing user experience

## Solution

Unisys delivered a complete IT transformation programme leveraging the M365 environment by seamlessly enabling a wide range of cloud-based services such as: Windows Autopilot, Windows Hello for Business, Windows Updates for Business, Windows LAPS and Windows 11.

## Results and benefits

New devices no longer rely on legacy on-prem infrastructure and are fully cloud-managed, reducing costs and increasing management capabilities

Autopilot allowed to streamline the device delivery and provisioning process

Intune and Windows Updates for Business ensure devices are always up to date reducing security risks

As their technology strategy grows and evolves, they continues to partner with Unisys on further projects and enhancements.

# Q&A

